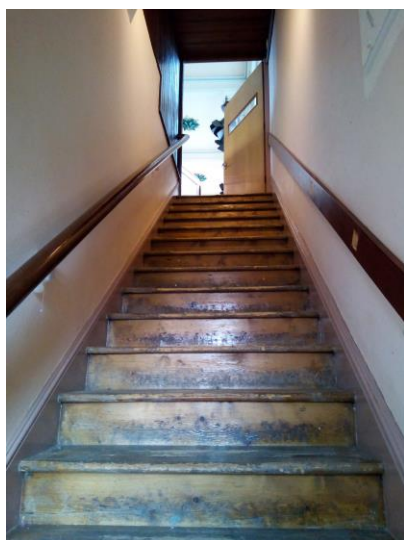


Creative Planning

Plans are progressing to restore and refurbish the Joseph Wright Hall – formerly the Salvation Army Citadel, and opened in 1867 as a Primitive Methodist Chapel.

The Queen Street School Preservation Trust is working to acquire funding for restoration and refurbishment of the building but is progressing with piecemeal improvements with the help of volunteers wherever we can.



Disabled access into the building and a lift to improve access to the Auditorium are central to these plans.

The electrics, lighting and heating system all need replacing.

Fire safety measures need improving too.



We need to improve the ground floor spaces to create multi-purpose activity rooms, a workshop and storage and visitor facilities.



The refurbished ground floor suite of rooms will enable us to expand our involvement in community education by providing better spaces for public meetings, courses and exhibitions organised by local groups. The multi-purpose rooms will offer facilities for music, dance and drama rehearsals, as well as continuing to be used for painting, yoga and other activities related to health and well-being.

Both floors – the first-floor auditorium with its unique historical character, and the modern ground floor multi-purpose spaces – will offer opportunities for private functions and family ceremonies with large-event potential using the Museum also, and the Assembly Rooms opposite.

And, crucially, the building will continue to be used for Museum events and community activities, and for school visits and adult group tours.

Community arts & performance



We have begun to create a unique performance space in what remains of the upper tier of the 1867 chapel, and it is becoming established as a community theatre with its distinctive performance ambience and fine acoustics.

Work to restore and refurbish the building is at an early stage. Interim improvements have been done by volunteers since the Salvation Army moved out in 2016. Help from Wren Kitchens enabled our volunteers to improve the kitchen.



Funding support from WREN Recycling enabled us to make replica pews to replace those removed in earlier years. The windows throughout have been repaired and restored and improvements to lighting, heating and electrics have been undertaken.

The platform stage has been modified to create a good performance space, and additional seating, stage curtains and pew cushions have been purchased thanks to the WREN Recycling grant and private sponsorship.

Theatrical sound and lighting systems have been installed by South Bank Players.

Additional storage and dressing room spaces on the first floor will be created.

